

# TECHKON

Perfect Color Made Easy

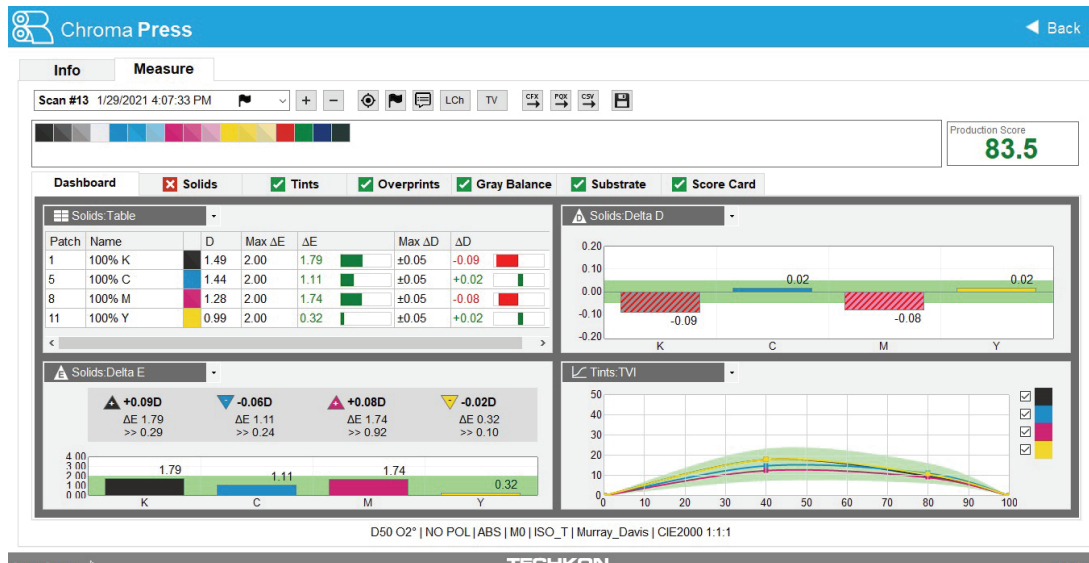


## INSTANT COLOR ANALYSIS

Quality Control for Ink and Press Departments

# CHROMAQA

INK  
LITE  
SUITE



## The EASIEST quality assurance software for Ink & Press departments

- Reduce your ink & paper waste by 20%
- Achieve brand color tolerances faster
- Computer aided decisions for less skilled operators
- Shorter make-readies, save valuable press time
- Communicate results to stake-holders and customers
- Centralized storage for your ink and color standards

ChromaQA is a state-of-the-art software suite driving the easiest process & spot color corrections across your printing operation. ChromaQA is software for your desktop that works in conjunction with your pressroom spectrophotometers to distill color measurement data into clear, precise and actionable feedback for your operators. With ChromaQA, operators are not required to be highly skilled users of spectrophotometers or computers. The ChromaQA software quickly guides operators to the optimum color match and eliminates the guesswork. As a result, ChromaQA can slash your pressroom make-ready times and ensure color consistency throughout each press run.

ChromaQA will work with SpectroDens handheld or SpectroVision inline spectrophotometers (as well as competitive instruments) via USB cable or through a wireless connection. ChromaQA also provides the options and advantages of cloud communications to share data across different locations, permit remote supervision, or to share a color results Scorecard or verification with your brand customers.

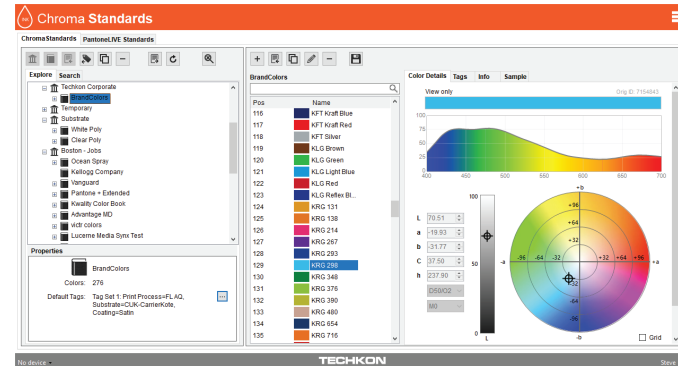
In addition to helping press operators, ChromaQA includes a dedicated software module to manage your ink color standards and QC new drawdowns in the Ink department as well as a sophisticated reporting engine for the Quality group. Finally, the cloud-based architecture ensures that you can easily share color standards, jobs and quality reports across your entire production team.

## Available in 3 Configurations

### INK

ChromaQA Ink is a cloud based software solution designed for packaging or commercial printers of any size that need a more efficient way to store, manage and share color standards throughout their organization. ChromaQA INK will save time and money by quickly locating colors for jobs and identifying when new colors and drawdowns must be created for customers.

Color standards are easily imported from other systems, stored in a book and library hierarchy, and quickly located with a search by name, property tags, or deltaE threshold. The solution allows technicians to measure new ink drawdowns with their spectrophotometer and immediately see PASS/FAIL indication and any recommended corrective actions to ensure inks are within color specifications before they reach the pressroom.



### LITE

ChromaQA LITE builds upon the capabilities of ChromaQA INK by adding features that enable press operators to quickly match brand and spot colors during make-ready and remain consistent throughout the production press run. ChromaQA LITE is designed specifically for small and mid-sized packaging printers.

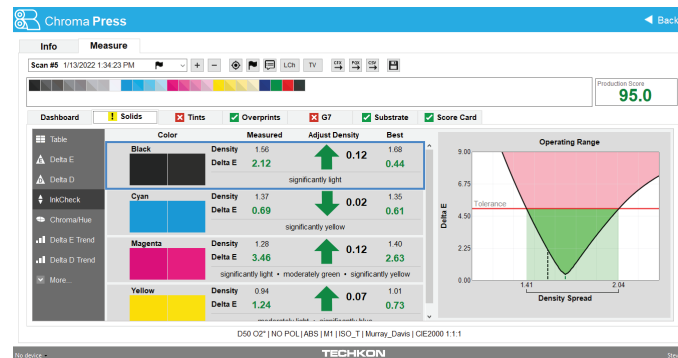
ChromaQA LITE removes the color matching guesswork, decreases make-ready times and ultimately increases your profitability. ChromaQA LITE provides press operators color matching feedback that is easy to understand, actionable and with clear PASS/FAIL indications. With a few measurements from the printed sample, operators instantly see deltaE PASS/FAIL results while trend graphs show color performance across longer press runs. When the job is done, powerful reporting engines allow the Quality group to prepare job reports for brand customers and to analyze production color data over time and across different shifts, locations, etc.



### SUITE

ChromaQA SUITE is an enterprise color quality solution that allows total color control across your print manufacturing process. ChromaQA SUITE builds upon the capabilities of ChromaQA INK and ChromaQA LITE, plus it adds advanced process control color metrics. ChromaQA SUITE is designed specifically for larger packaging printers who wish to improve the color accuracy of their ink supply chain, shorten pressroom make-readies and ensure color consistency across each press run.

ChromaQA SUITE is designed for spot colors, 4C process work, ECG jobs and also tracking G7 compliance. Press operators can design a custom dashboard for their specific needs that includes important print metrics such as Solid Ink Density, deltaE, CIELabCh, TVI, Trap, Gray Balance, G7 and more. When the job is done, powerful reporting engines allow for data query to facilitate continuous process improvements while customized score cards provide visibility for external brand customers and internal quality managers.



## Comparison Chart

IN THE INKROOM	INK	LITE	SUITE
Import color standards from CxF	✓	✓	✓
Measure physical samples to create new standards	✓	✓	✓
Organize in Book/Library hierarchy	✓	✓	✓
Create and attach meta data Tags to color standards	✓	✓	✓
See spectral, CIELab, & CIELCh, and measurement conditions for standards	✓	✓	✓
Search for colors by name, Tags, and $\Delta E$ tolerance	✓	✓	✓
Perform QC checks on new batches of ink	✓	✓	✓
Export color standards as CxF or download to the SpectroDens	✓	✓	✓
Support connection to PantoneLIVE	✓	✓	✓
IN THE PRESSROOM	INK	LITE	SUITE
Create job templates containing color standards and tolerances		✓	✓
InkCheck feature shows density adjustments to achieve lowest $\Delta E$		✓	✓
CIElab/CIELCh color differences plots		✓	✓
Trend graphs to monitor performance of long press runs		✓	✓
Supports SpectroDens handheld spectrophotometer		✓	✓
Supports popular 3rd party spectrophotometers		✓	✓
Supports SpectroVision inline spectrophotometer			✓
Color bar scanning			✓
TV/TVI for tint color patches			✓
G7 process verification			✓
ScoreCard system			✓
MIS integration for automatic job creation			✓
Integration with Schawk ColorDrive			✓
IN THE QUALITY GROUP	INK	LITE	SUITE
Customized job reports		✓	✓
Web-based reporting that produces line, bar, and pie charts of color data across multiple jobs		✓	✓
Query module for specific data extraction to facilitate learning and continuous process improvements			✓

### Specifications

Microsoft Windows® 7, Microsoft Windows® 8.1, or  
 Microsoft Windows® 10  
 x64 Processor: 1.4 GHz  
 4GB RAM  
 1GB of available disk space  
 Monitor resolution of 1200 x 800 pixels or higher  
 Powered USB port  
 Internet connection

ChromaQA is a cloud based software solution. Your purchase of a ChromaQA solution provides an annual license for one or more seats. The more seats you purchase, the lower the cost per seat.

Did you know you may qualify for a free trial of the ChromaQA software? Contact Techkon USA to learn more.