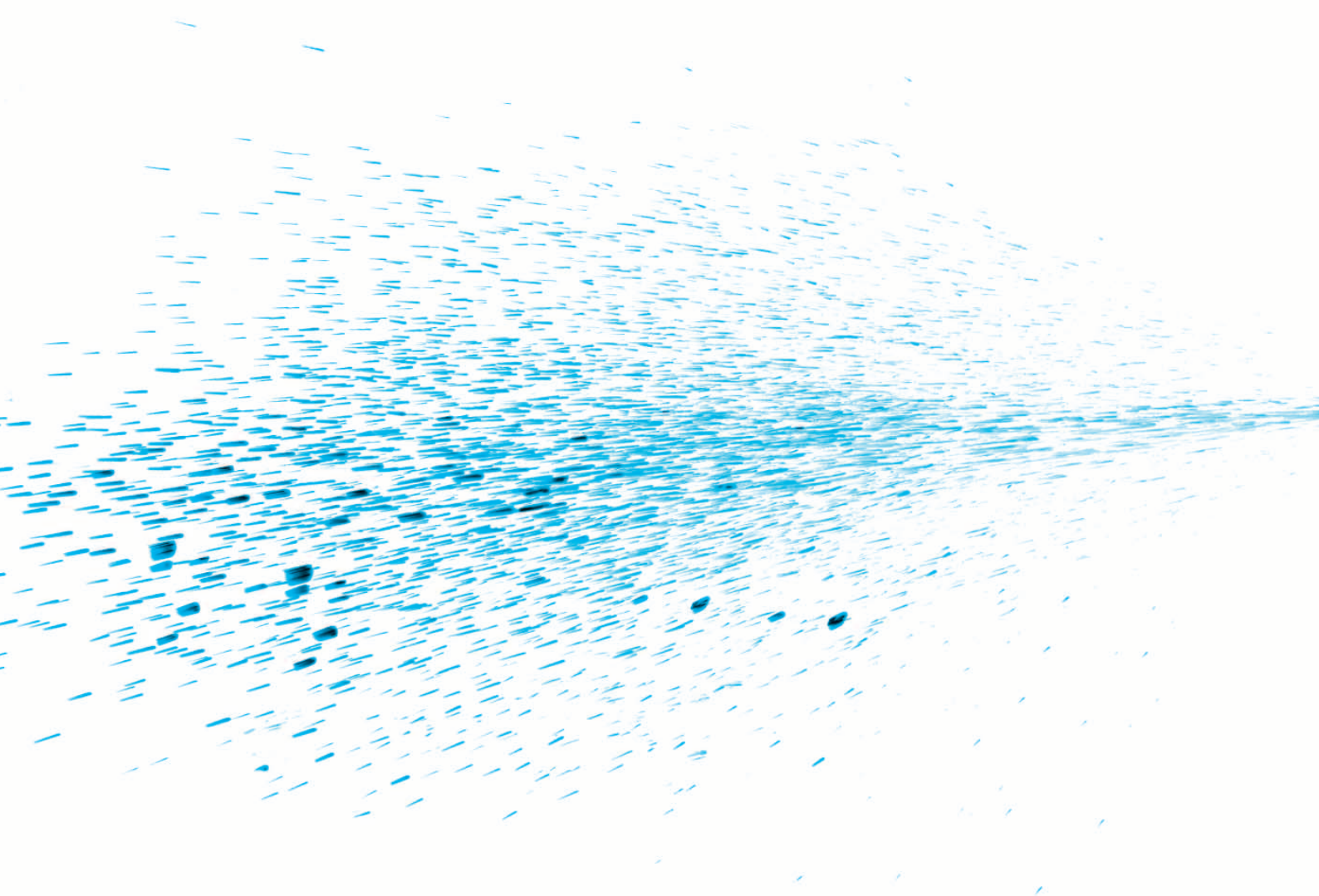


gm9 colorProof



GMG ColorProof o5 – The new
dimension in proofing

GMG ColorProof o5 – Even easier and more reliable operation!

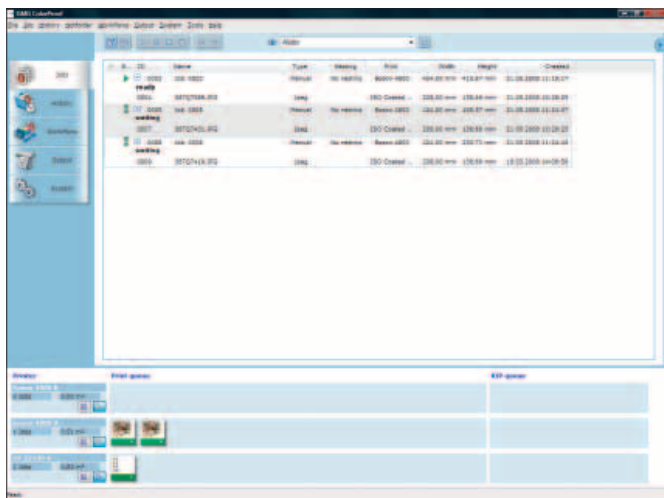
GMG ColorProof has become the quality standard in the proofing sector in many countries. This fact is documented not only by its success in recent years – as not least reflected in the numerous awards won in various product comparisons – but also by the satisfaction expressed by our customers.

And it is now time to take the next step: focusing mainly on user-friendliness and production reliability, we have now developed GMG ColorProof o5 – with a host of intelligent functions and a completely new user interface!

What's new in GMG ColorProof o5?

◀ *Proofing is easier than ever!*

When re-designing GMG ColorProof o5, attention concentrated on an even simpler and more intuitive user interface. Logically arranged elements and different views make for greater clarity in the main window of GMG ColorProof o5.

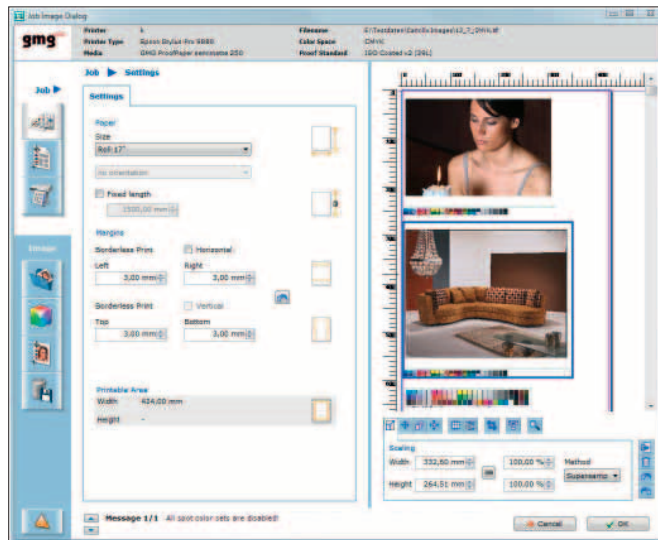


The Jobs view in GMG ColorProof o5

Current jobs are displayed in the Job List and can be filtered and sorted in accordance with user-defined criteria. Previously printed jobs are managed in the History view, from where they can be proofed again with a single click.

The display of the printer queues at the bottom edge of the user interface offer an instant overview of the installed printers and the respective jobs to be printed. All key properties for a manual proofing job, e.g. Proof Standard, proofing medium and printer,

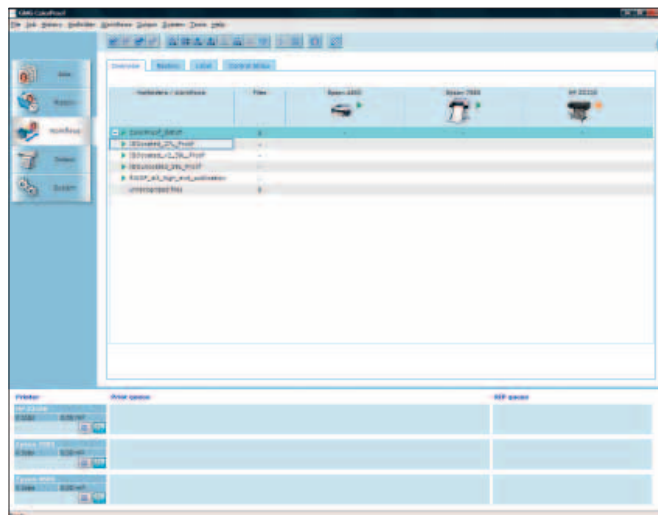
can quickly be set in the new Job Manager. The data to be proofed are displayed immediately, making it instantly possible to see whether an image is missing, or whether it needs to be rotated, resized or positioned differently.



The Job Manager of GMG ColorProof o5

Visualization of the workflows for automatic proofing jobs shows at a glance which hotfolders, workflows and printers are linked.

The user can immediately access the settings and check system utilization. This means that any problems can be detected and corrected much faster and more easily.



The workflow overview in GMG ColorProof o5

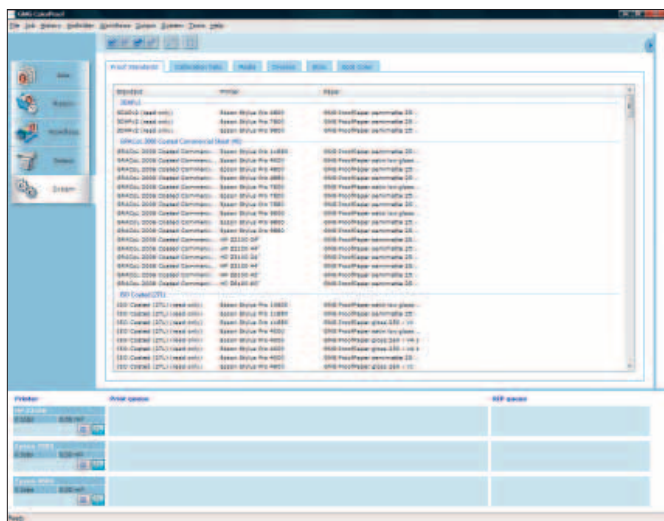
New technology: GMG Proof Standards and calibration sets

◀ *Very simple handling, greater production reliability*

Working with GMG Proof Standards and calibration sets reduces possible sources of error, such as incorrect printing settings, calibration files or color profiles. Maximum proof quality is also guaranteed at the same time – even if the user has no in-depth knowledge of color management.

Among other things, a Proof Standard defines the following:

- The printing standard to be simulated,
- The corresponding GMG color profile (MX4) or ICC profile,
- The medium used for proofing,
- The printer used for printing, and
- The calibration set used.



The list of available GMG Proof Standards

Closely related to the Proof Standards are the calibration sets. Among other things, these include:

- All calibration files (MX3) for the different measuring instruments of a printer/proof medium combination,
- The printer settings, e.g. resolution, color mode, unidirectional or bidirectional printing,
- Quality criteria and tolerances for printer calibration.

The user merely has to select the appropriate Proof Standard. If its parameters do not match the actual settings, the job is automatically stopped for checking. If all parameters are complied with, this is documented by a „GMG Standard“ symbol in the text line of the proof – another reliable indicator for even faster assessment of the quality of a proof.

◀ *Rapid start-up*

Calibration sets for a wide variety of printer/proofing medium combinations are included in the scope of supply, as are the

GMG Proof Standards. They are available for all international printing standards (ISO, PSR, SWOP/GRaCoL, 3DAP, etc.) and optimized both colorimetrically and visually.

◀ *Remote proofing*

Complete proofing jobs, including the respective Proof Standard, can be exported and imported for remote proofing. It now takes little effort to obtain identical results both on the originator side and at the remote end.

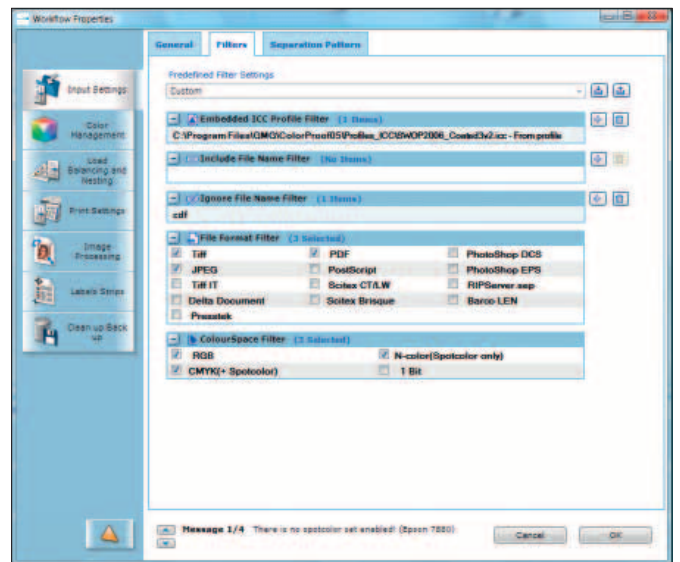
◀ *Soft proofing*

In GMG ColorProof o5, the screen preview is automatically adapted to the color space of the monitor, and a soft proof is generated on the basis of the GMG Proof Standard – provided that the monitor is calibrated and profiled.

More productive workflows with GMG

◀ *Filter rules for automated production*

Filter rules enable various workflows with different processing steps to be assigned to one hotfolder. For example, filter rules check the file format, the color space, and embedded profiles, as well as naming conventions, and then automatically forward the files to the correct processing steps.



Filter rules in the workflow

◀ *Latest RIP technology*

The RIP technology is based on the latest Adobe® PDF Print Engine. It is fully PDF/X-compatible and processes PDF files up to Version 1.6. Pixel and vector data can be processed in the same hotfolder. The software automatically detects whether the data need to be RIPed.

▼ *Load Balancing*

Load Balancing automatically distributes the proofing jobs among multiple connected printers. This ensures that the capacity of the available printers is optimally utilized and productivity maximized.

Other new features in brief

- In conjunction with GMG ProofControl and a measuring instrument, the „Test Calibration“ function permits effortless checking of the calibration. To do so, a small color wedge with just a few color patches is printed out, measured, and evaluated in GMG ProofControl.
- Various proofing jobs using different color profiles can now be output on a proofing medium.
- GMG ColorProof supports the processing and output of 16-bit TIFF files.
- The Printer Calibration Wizard can now be used to compare the individual iterative calibration steps with each other, in order to be able to better decide which calibration step yields the best result.
- Each job is assigned its own Job and Image ID. This can also be included in the print as a line of text, permitting unequivocal allocation of jobs and printed image data at a later time.
- Multiple media wedges can be printed for each image in the job, e.g. in order to have one media wedge for the customer's receiving inspection, while another media wedge is used for in-house checking. For proof jobs with several images, there is also the possibility of outputting just one media wedge per proofing job.
- Spot colors can be output in calibrated form for consistent results.
- Comprehensive online Help is integrated in the software, giving the user targeted assistance regarding the individual program windows. Many dialogs also include quick info.

▼ *Greater security for the future*

GMG ColorProof o5 not only has a new user interface. The underlying software has likewise been entirely reprogrammed in modular fashion. This ensures that future versions will always be able to do justice to current market requirements.

Supplementary options for GMG ColorProof o5

GMG DotProof permits the creation of halftone proofs using original imagesetter data. GMG Connect enables linking of color management workflows, or Web-based control of GMG products. GMG ColorServer performs fully automatic color transformations between various color standards.

Trademark notice

© 2008 GMG GmbH & Co. KG. GMG, the GMG logo and GMG DotProof are trademarks or registered trademarks of GMG GmbH & Co. KG. Adobe and the Adobe logo are trademarks or registered trademarks of Adobe Systems Inc. in the USA and/or other countries. All other names and products are trademarks or registered trademarks of the respective company and expressly acknowledged as such. Subject to technical and other alterations.

GMG GmbH & Co. KG
Moempelgarder Weg 10
72072 Tuebingen
Germany

Tel.: +49 (0) 70 71/9 38 74-0
Fax: +49 (0) 70 71/9 38 74-22
info@gmgcolor.com
www.gmgcolor.com

Dealer's stamp